

What is HEIRNET?

HEIRNET - the Historic Environment Information Resources Network - was formed by the Council for British Archaeology with a group of organisations that all have an interest in information relating to archaeology and the historic environment.

HEIRNET aims to help organisations that maintain information about the historic environment to work together, sharing skills and improving access to their information resources for conservation, research, learning and general interest.

The Historic Environment Information Resources Network consortium:

Archaeology Data Service, Association for Local Government Archaeological Officers, Association of Regional & Island Archaeologists, British and Irish Archaeological Bibliography, Cadw, Council for British Archaeology, English Heritage, Environment and Heritage Service (Northern Ireland), Historic Scotland, Institute of Field Archaeologists, Institute for Historic Building Conservation, Manx National Heritage, mda, Portable Antiquities Scheme, Resource, Royal Commission on the Ancient and Historical Monuments of Scotland, Royal Commission on the Ancient and Historical Monuments of Wales, Society for Museum Archaeologists, Standing Conference of Archaeological Unit Managers

HEIRNET

Historic Environment Information
Resources Network

<http://www.britarch.ac.uk/HEIRNET/>
email: HEIRNET@britarch.ac.uk

HEIRNET enables access to Historic Environment Information Resources for conservation, research, learning and general interest.

<http://www.britarch.ac.uk/HEIRNET/>



Callanish II stone circle © RCAHMS & SCRAN

HEIRNET

c/o, Council for British Archaeology
Bowes Morrell House
111 Walmgate
York
YO1 9WA

tel: +(44) (0)1904 671417

fax: +(44) (0)1904 671384

email: HEIRNET@britarch.ac.uk

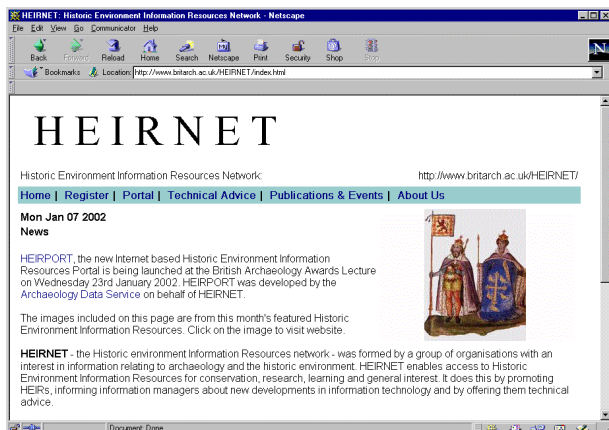
web: <http://www.britarch.ac.uk/HEIRNET/>

HEIRNET – the network for organisations with an interest in information relating to archaeology and the historic environment.

HEIRNET members are working together to develop:

- The **HEIRNET** register – an online index that allows users to search for information about resources that may be of interest and provides a link to web resources where these exist.
- A **technical advice** service for information managers - provides information about new developments in information technology and points to sources of specialist advice.
- **HEIRPORT** – an online web portal for the Historic Environment.
- Understanding of **user needs**.

The HEIRNET register and HEIRPORT are helping **HEIRNET** to pursue its vision of widening access to historic environment information resources.



To contact us:

email: HEIRNET@britarch.ac.uk
web: <http://www.britarch.ac.uk/HEIRNET/>

HEIRPORT

<http://ads.ahds.ac.uk/heirport>



HEIRPORT is an Internet based portal that allows users to search several databases at the same time. HEIRPORT provides access to:

- ArchSearch (the ADS catalogue with information from the English Heritage NMR, local SMRs and others)
- CANMORE (the RCAHMS National Monuments Record)
- SCRAN (the Scottish Cultural Resource Access Network)
- Portable Antiquities programme database.
- More databases will be available in future.

People can use **HEIRPORT** to search for information about a location, a type of monument or a period that is of particular interest. It is designed for people with an interest in the historic environment and makes use of advanced communications technology to provide access to the most up-to-date information available.

HEIRNET Register

<http://ads.ahds.ac.uk/heirnet/index.cfm>



The **HEIRNET register** is a searchable online index that contains contact details for Historic Environment Information Resources held by organisations from across the UK. The register includes details of:

- Local authority Sites and Monuments Records in England, Scotland, Wales and Northern Ireland
- Local authority Historic Buildings records
- Resources that have been created with funding from the New Opportunities Fund and the Heritage Lottery Fund
- Specialist databases created as a result of university based research projects
- Archaeological archives held in museum collections and public records offices
- and many others

An on-line registration form is provided to enable those who are creating information resources to include their details in the register.